



# IDF Europe's T2D Platform

## T2D Platform Development

**Jessica Nastos**

Project and Communication Coordinator

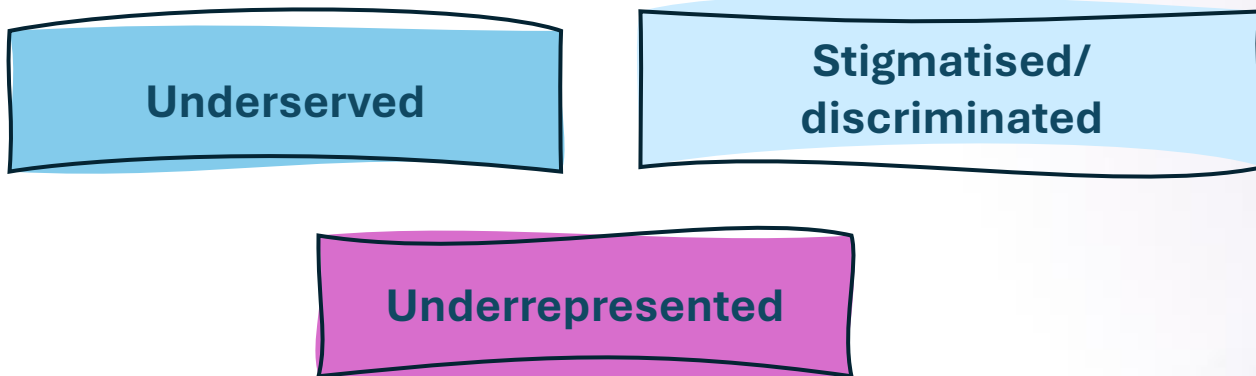
Rome | 12 Oct 24

[www.idf-europe.org](http://www.idf-europe.org)

# Why a T2D Platform



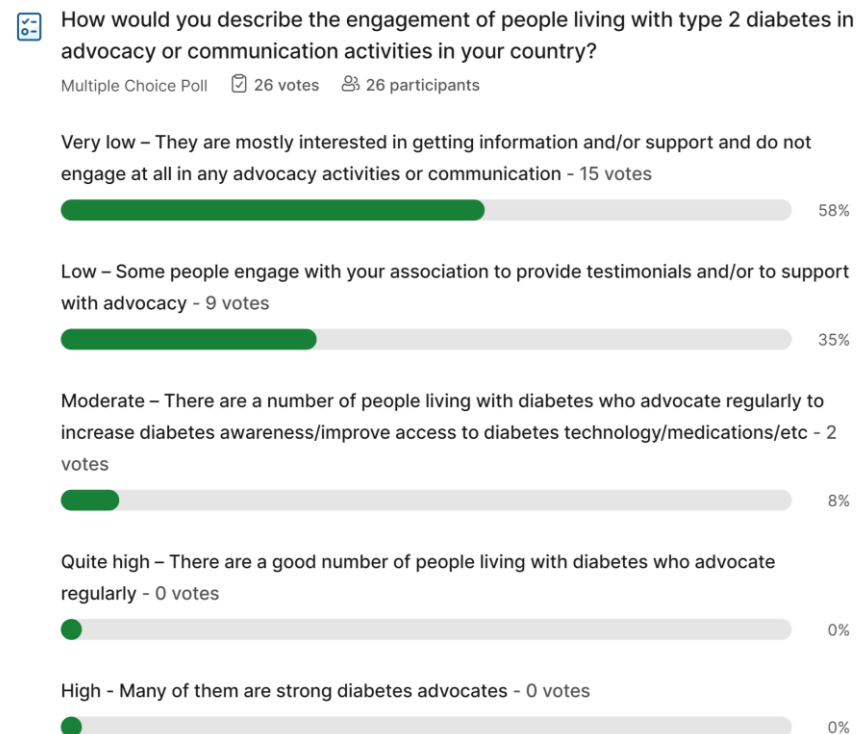
## The T2D Community is often...



The T2D platform aims at improving **representation and engagement** of people living with T2D in advocacy initiatives, research projects and other programmes, especially at the pan-European level.

The platform is being developed in collaboration with IDF Europe Member Associations (MAs) and it will help support their advocacy work at national level.

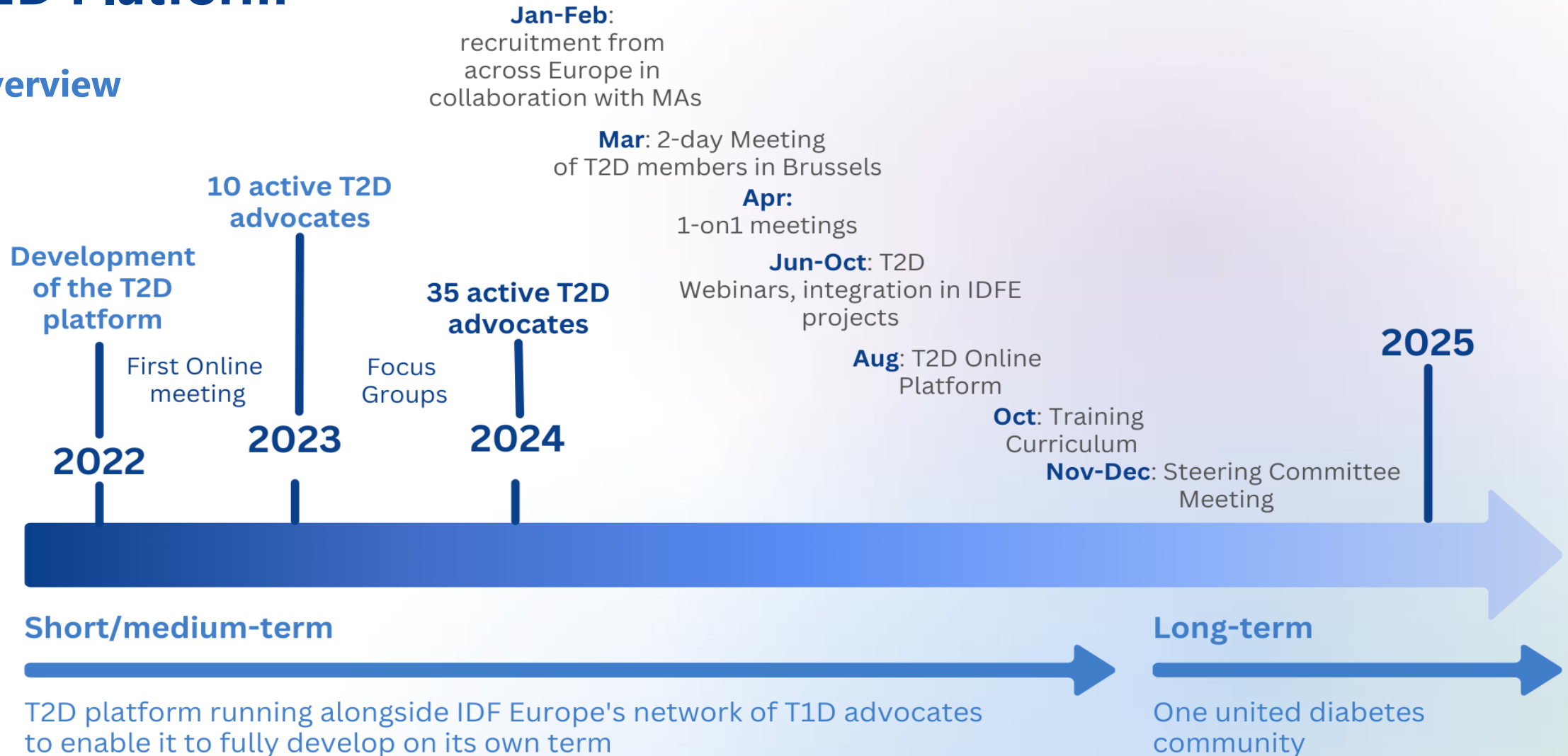
## During the last Regional Council:



# Platform of People living with Type 2 Diabetes: T2D Platform



## Overview



# Platform of People living with Type 2 Diabetes: T2D Platform



## Next Steps: 2025

Continue ongoing efforts to engage, integrate and support the T2D members

Next Meeting of  
the T2D  
Platform

Next  
recruitment  
phase

“Train the  
Trainer”  
programme

1-on-1 calls with  
associations

Implementation  
of the Training  
Curriculum

**50-70 active advocates by Q4**

# In Person Meeting in Brussels, March 2024



# In Person Meeting in Brussels

## Takeaways



International Diabetes Federation Europe

MEETING REPORT

First Meeting of IDF Europe's T2D Platform

March 2024

novo nordisk Lilly DIABETES

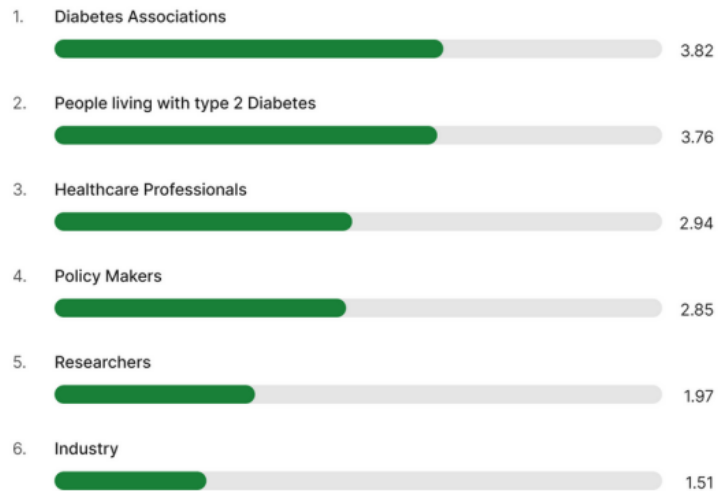
We thank our partners for their support!



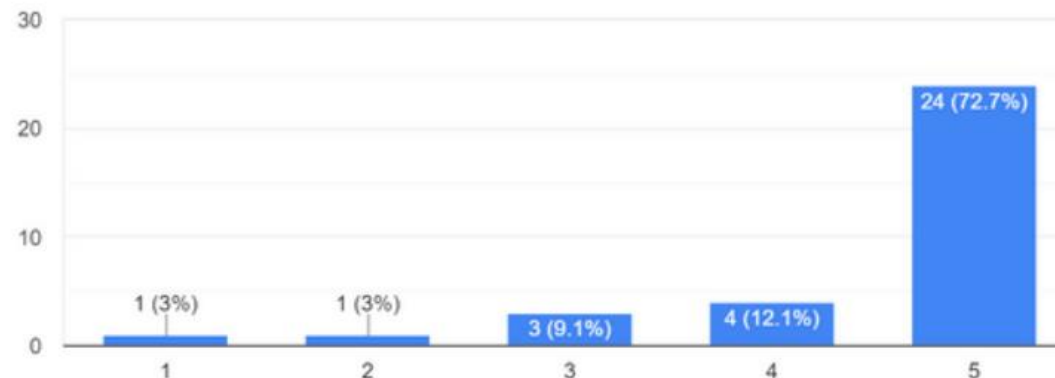
SCAN ME

The image shows a meeting report cover for the 'First Meeting of IDF Europe's T2D Platform' held in March 2024. The cover features the IDF Europe logo, a 'Type 2' icon, and several photos of the meeting attendees and a presentation slide titled 'Motivation' with the text 'to SPARE our TIME, EXPLORE LIFE'. A large QR code is prominently displayed on the right side of the cover, with the text 'SCAN ME' below it. At the bottom, logos for sponsors 'novo nordisk' and 'Lilly DIABETES' are shown, along with the text 'We thank our partners for their support!'.

Where do you think you could contribute the most ( Please rank the options from the highest to the lowest priority):



How likely are you to engage more with your national diabetes association after the event?



# In Person Meeting in Brussels



## Takeaways: Curriculum



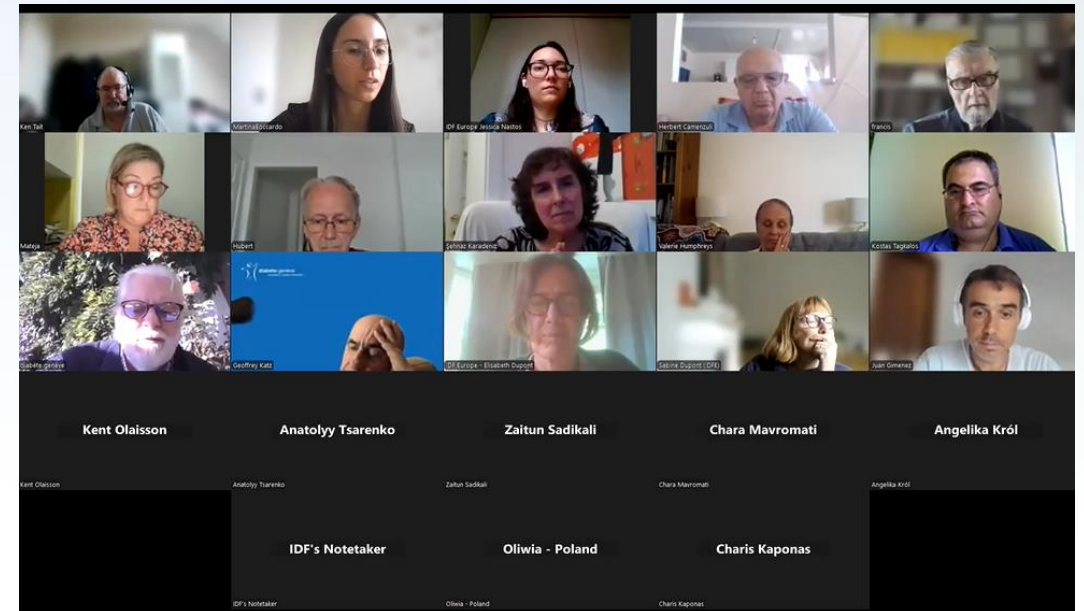
# T2D Webinars



**Webinar 1: Nutrition, Plant-based Diets and Diabetes**

**Webinar 2: The Diabetes Landscape across the Europe Region**

**Upcoming Webinar 3: Diabetes and its interplay with CVD, CKD and Obesity**





# T2D Forum



Connect



Discuss



Share

The screenshot displays the website for the International Diabetes Federation Europe. The header includes the organization's logo and name. A navigation bar contains icons for home, search, and notifications. The main content area is divided into two columns. The left column features a 'Blogs' section with four entries: 'T2D Meeting Report' (21 August 2024), 'Diabetes Complications Resource' (21 August 2024), 'Type 2 Diabetes. A preventable catastrophe?' (21 August 2024), and 'IDFE Position on Unmet Medical Needs' (21 August 2024). The right column shows a social media-style update from 'Kenneth' posted on August 21, 2024. The update text reads: 'Have just shared the research that Charlie Churchill and my myself on the Digital Inequality or Inefficiency 'an investigation into the effectiveness of the Continuous Glucose Monitors (CGM) rollout to those with Type 2 diabetes using insulin' in the UK. Please read attached'. Below the text is a PDF attachment titled 'Digital-Inequality-or-Inefficiency-1.pdf' (181 kb). At the bottom of the update, it shows 'You, Charlie and Jessica' and interaction buttons for 'Like' and 'Comment'.

# T2D Platform Integration in IDF Europe Projects



- Speaker participation at **EASD 2023 & 2024** symposium
- Participation in **ELPA advocacy training event** on Liver disease, Diabetes and Obesity
- Participation in **Webinars and Events**
- Participation in **Editorial Board of several** IDFE publications (*T2D a preventable catastrophe*; Upcoming: *The use of CGM in Pre-Diabetes, T2D and Obesity*;) )
- Participation in Industry **Advisory Panels**
- Involvement in **EU-funded Projects**
- Strong engagement in IDF Europe **communication** campaigns
- Meeting with **Policy-Makers**



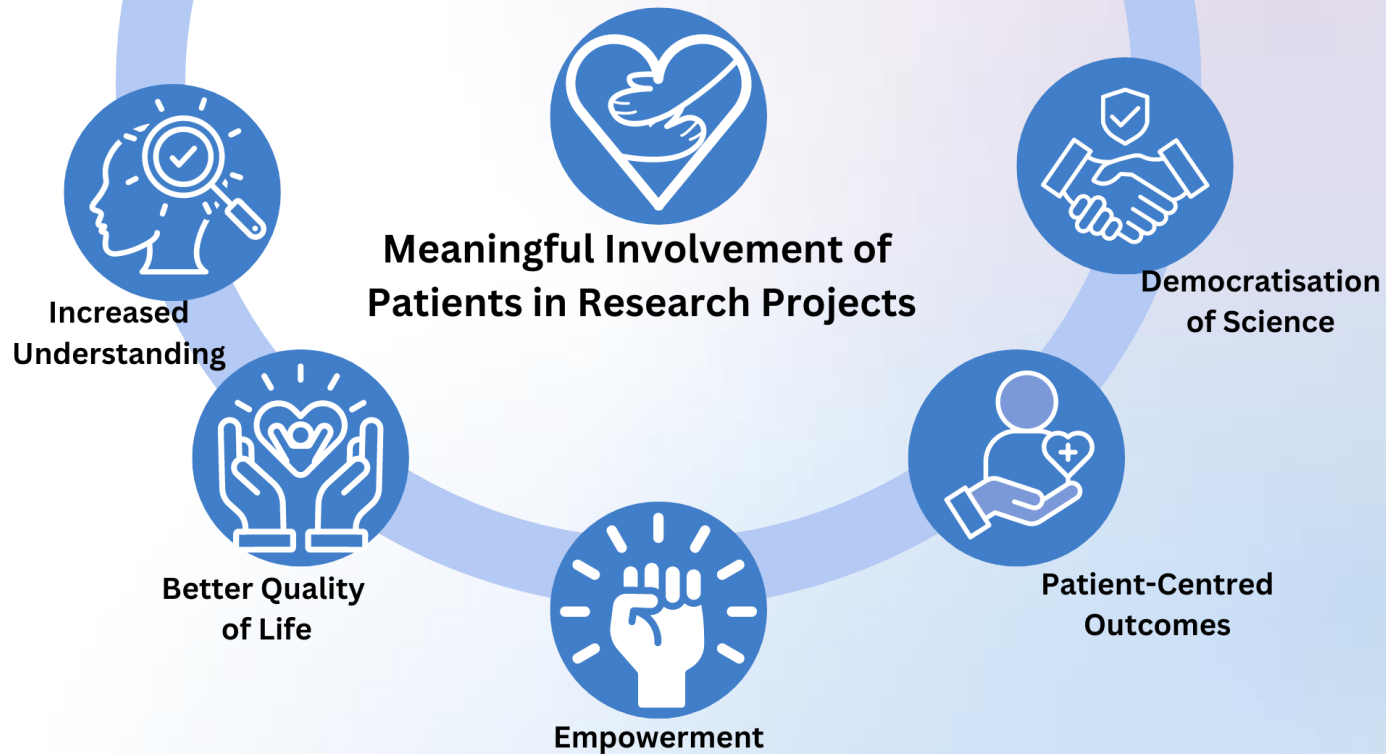
Interview with T2D Platform member, Vilen Michev



# Patient Involvement and Engagement in Research Projects

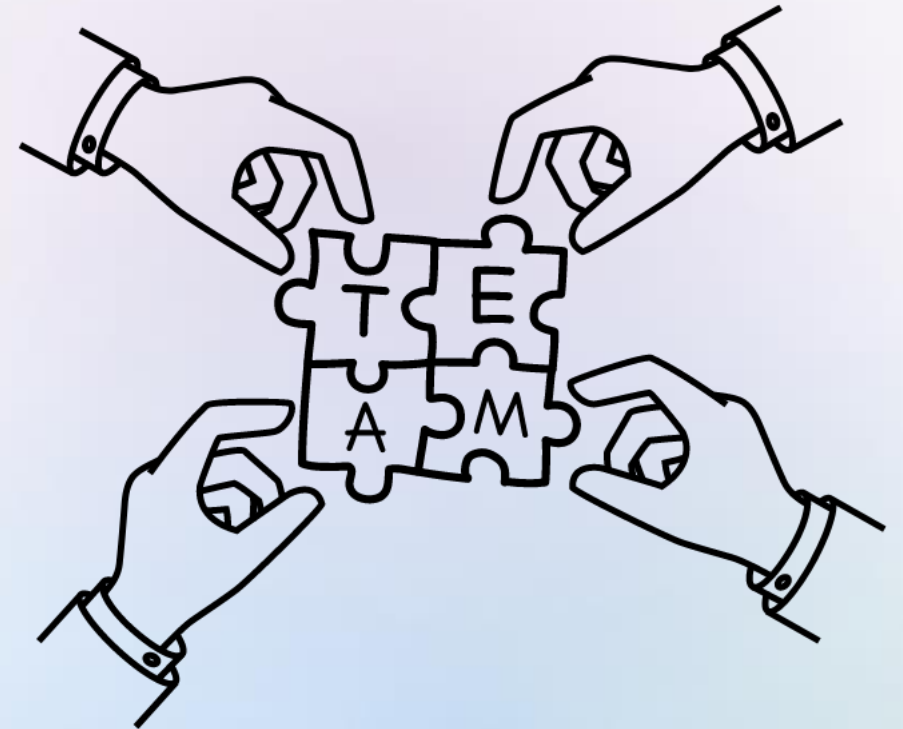


PwD make up the **Patient Engagement Panel (PEP)** at this Eu-funded project on decentralised clinical trials. They provided input at every step of the research project, and the panel is made up of people living with T1D and T2D.





# General Discussion



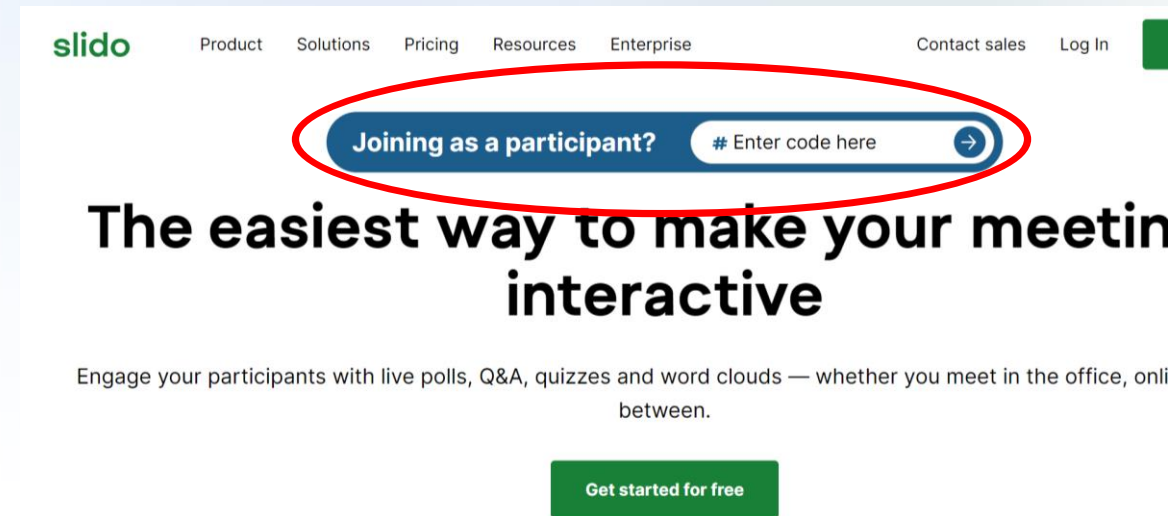
# Join our interactive Session

Take part in live polling through slido!



**Slido.com**

OR



# T2D Curriculum

## Provisional Outline



Basics of Diabetes

Diabetes Types

Diabetes Management

Diabetes Complications



Introduction to Advocacy

What is Advocacy?

EU Policy

Diabetes Regulations and legislation

Diabetes Landscape

T2D misconceptions and Stigma



Practical Advocacy

Advocacy Skills Training

Contacting Policy Makers

Strategy: Advocacy Plan

Framing and Storytelling

Data for Advocacy



Diabetes Research

Patient Involvement in Research

Research structure and procedures

Success Stories



Supplementary Courses

Fundraising

Digital Health