

Diabetes and well-being: more than access to care

IDF side event at the 77th WHA

 Geneva | Online

28 May 2024
18:00-20:00 CEST





DIABETES AND WELL-BEING: MORE THAN ACCESS TO CARE

WELCOME



PROF AKHTAR HUSSAIN

IDF President

Bangladesh/Norway

 [@IntDiabetesFed](https://twitter.com/IntDiabetesFed)



DIABETES AND WELL-BEING: MORE THAN ACCESS TO CARE

WELCOME STATEMENT



DR TEDROS ADHANOM GHEBREYESUS

WHO Director General

Ethiopia

 [@DrTedros](https://twitter.com/DrTedros)

MINISTERIAL PANEL





DIABETES AND WELL-BEING: MORE THAN ACCESS TO CARE

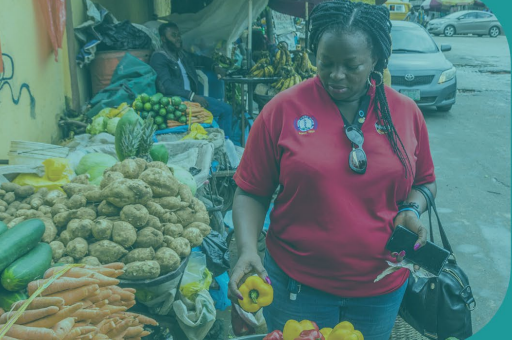
STATEMENT FROM MAURITIUS



HONOURABLE KAILESH KUMAR SINGH JAGUTPAL

Minister of Health and Wellness

Mauritius



DIABETES AND WELL-BEING: MORE THAN ACCESS TO CARE

STATEMENT FROM QATAR



DR MOHAMMED AL-THANI

Director of NCD Prevention Programmes, Ministry of Public Health

Qatar



DIABETES AND WELL-BEING: MORE THAN ACCESS TO CARE

STATEMENT FROM CHILE



DR SOLEDAD MARTÍNEZ GUTIERREZ

Head of the Division of Disease Prevention and Control, Ministry of Health

Chile



DIABETES AND WELL-BEING: MORE THAN ACCESS TO CARE

STATEMENT FROM WHO



DR BIANCA HEMMINGSEN

Medical Officer, NCD Department

WHO



DIABETES AND WELL-BEING: MORE THAN ACCESS TO CARE



HON KAILESH KUMAR SINGH JAGUTPAL

Minister of Health and Wellness

Mauritius



DR MOHAMMED AL THANI

Director of NCD Prevention Programmes,
Ministry of Public Health

Qatar



DR SOLEDAD MARTÍNEZ

Head of the Division of Disease
Prevention and Control, Ministry of Health

Chile



DR BIANCA HEMMINGSEN

Medical Officer, NCD Department

WHO

DIABETES AND WELL-BEING: THE FOCUS OF THE 2024-2026 WORLD DIABETES DAY CAMPAIGN

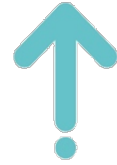


THE INCREASING GLOBAL IMPACT OF DIABETES



THE INCREASING GLOBAL IMPACT OF DIABETES

South & Central America (SACA)



50%
increase

South-East Asia (SEA)



68%
increase

Middle East & North Africa (MENA)

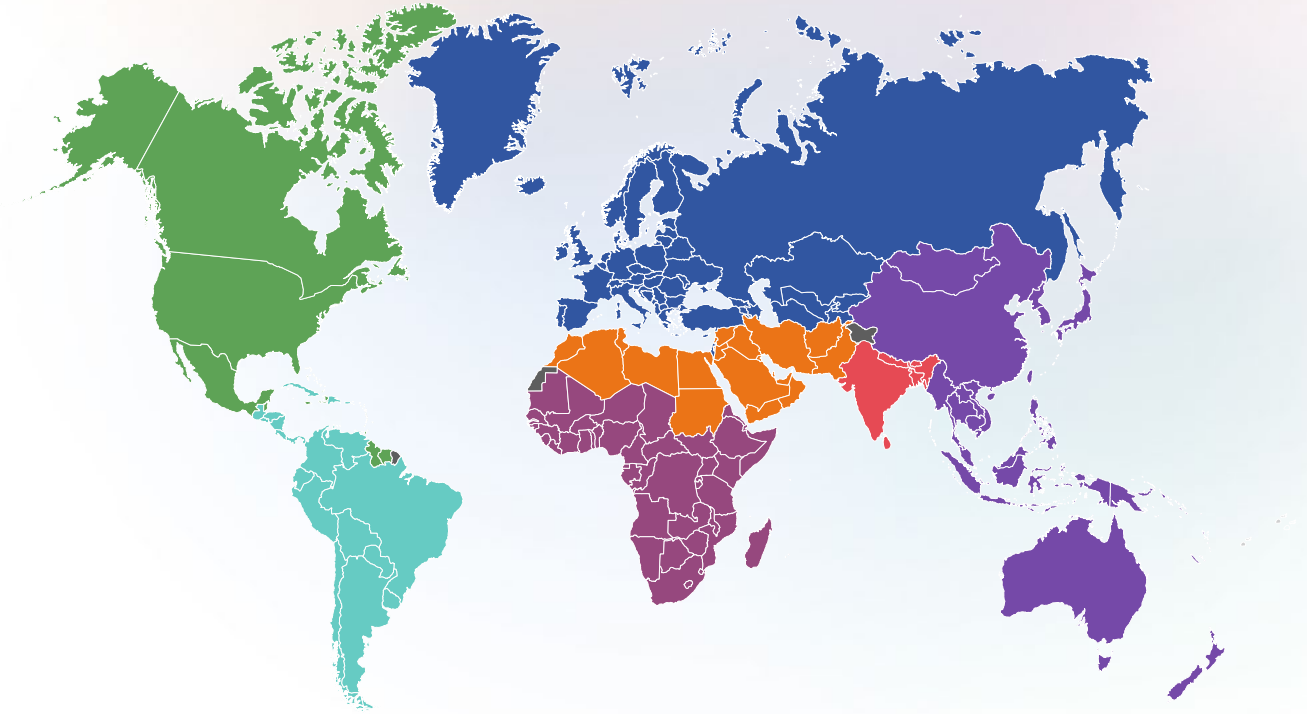


87%
increase

Africa (AFR)



134%
increase



Global



46%
increase



Anorexia, bulimia and **binge-eating disorder** are **more common** in people living with diabetes than in the general population.

Dementia is emerging as a major cause of mortality in the general population. Strong evidence suggests **diabetes doubles the risk** of Alzheimer's disease and vascular dementia.



People living with diabetes are **2 to 3 times more likely** to have **depression.**



People living with **diabetes and depressive disorders**
are at **50% higher mortality risk** than people with diabetes
and no history of depression.

Individuals with higher levels of **diabetes distress** were found to have a **1.8-fold higher mortality rate**, a similar increased risk of cardiovascular disease and **lower quality of life.**

Considerable evidence suggests diabetes is associated **with**
suicide ideation and attempts. The risk of suicide
death is **1.6 – 3.6 times greater** than in the general
population.

WORLD DIABETES DAY 2024-26

Diabetes & Well-being

CAMPAIGN GOAL

Put well-being at the
heart of diabetes care



THREE-YEAR FOCUS AREAS

1

2024

Awareness

Ensure the impact of diabetes on well-being is understood

2

2025

Impact

Mobilise audiences to put well-being at the heart of diabetes care

3

2026

Change

Build on year 1 and 2 to ensure a lasting legacy in healthcare policy.

2024: RAISING AWARENESS

Demonstrate the impact of diabetes on well-being to a global audience.

Highlight the lived experiences of people living with diabetes and their caregivers.



TARGET AUDIENCES

People living with
diabetes & their
caregivers



Share their stories and ask
for support with their
well-being.

Healthcare professionals



Adopt people-centric care that
supports the well-being of
people with diabetes.

Policymakers



Made aware of the connection
between diabetes and
well-being and change policy
as required.

DISCUSSION PANEL





DIABETES AND WELL-BEING: MORE THAN ACCESS TO CARE



DR JACKIE MAALOUF

President of DiaLeb and IDF Vice-President

 [@JackieMaalouf](https://twitter.com/JackieMaalouf)



MR BENT LAUTRUP-NIELSEN

Head of Global Advocacy, World Diabetes Foundation

 [@WorldDiabetesF](https://twitter.com/WorldDiabetesF)



DR MARK BARONE

Founder and General Manager of Intersectoral Forum of NCDs in Brazil and former IDF Vice-President

 [@ForumDCNTs](https://twitter.com/ForumDCNTs)



MS SADHAVI CHAUHAN

Government Engagement and Policy Manager, Access to Medicine Foundation

CLOSING REMARKS



CLOSING REMARKS

Effective partnerships among all stakeholders are necessary to break through the barriers to well-being.

A JOINT RESPONSIBILITY
WE CANNOT DENY



Shape the future of diabetes



IDF World Diabetes Congress

Bangkok, Thailand, 7 – 10 April 2025

Why attend

- 10 programme streams
- 130 hours of scientific sessions
- 250 international speakers

Key dates

- 1 Apr 2024 Registration opens
- 15 Jul – 15 Sep 2024 Abstract submissions
- 31 Oct 2024 Early rate deadline



THANK YOU!





International Diabetes Federation

Improving the lives of people living with diabetes and preventing diabetes in those at risk

www.idf.org

