

Regional NEWSLETTER

Issue 3 – April 2024

Feature our Members No.2

Diabetes Malaysia



President

Prof. Ikram Shah Ismail

Members

12,638 members (2023)

[Access to the Website](#)



Diabetes Malaysia (DM) is the pioneer nationwide diabetes organization in Malaysia. Registered in 1983 as a non-Governmental Organization under the Societies Act 1966. We have 14 state branches, 36 district branches and about 12,638 members in 2023.

Main Activities

- ✓ Community education and awareness
- ✓ Establish resource centers
- ✓ Diabetes Children and Adult Foundation
- ✓ Publish booklets for school
"Information Guide - Diabetes in Schools"
- ✓ Provide newest information on website.

Health screening at a DM branch



Diabetes Malaysia Conference 2024

Date: 2-4 August 2024

Venue:

Wyndham Grand Bangsar,
Kuala Lumpur

Web site:

<https://diabetesmalaysia.org.my/#>

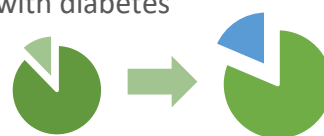


Diabetes in Malaysia



It is estimated that 3.9 million adults are living with diabetes

2011
11.2%



2019
18.3%

- Prevalence of diabetes in Malaysia: increased from 11.2% in 2011 to 18.3% in 2019*

*according to the National Health and Morbidity survey

Why is diabetes common in Malaysia? What measures have been taken?



In 2017, Malaysia spent nearly RM10 billion to treat non-communicable disease (NCD) with RM4.38 billion spent on treating diabetes, making up 45% of the ministry's total expenditure for treating NCDs. The Ministry of Health has implemented a **sugar-sweetened beverage tax** since July 2019. The Government has announced in the 2024 Budget to increase the excise duty on sugary drinks from 40 to 50 cents per liter. DM is a member of Non Communicable Diseases (NCD) Malaysia, which is expected to sign an agreement with the Ministry of Health to have formal meetings each year with NCD Malaysia and its affiliates.



Incidence and trends of type 1 diabetes before and after 2000 in the Western Pacific Region: A systematic review and meta-analysis

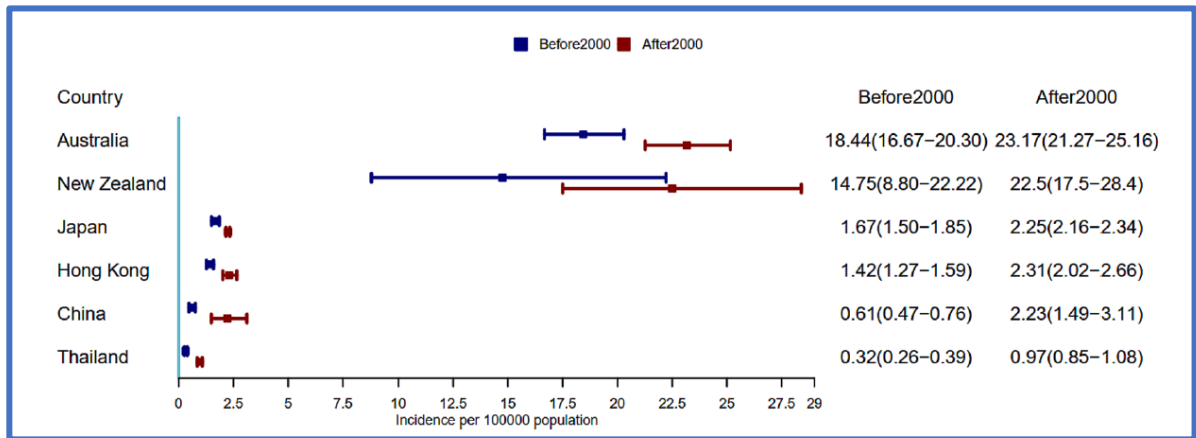
Du Wang^a, Xiaoli Hou^b, Juan Huang^c, Jianjing Sun^d, Takashi Kadowaki^e, Moon-Kyu Lee^f, Alicia J. Jenkins^g, Linong Ji^{h,*}

A systematic review related to the incidence of Type 1 diabetes in our region has been published.

Led by Professor Linong Ji, and funded by a grant from the IDF EMCR researchers (Dr Wang, Hou, Huang and Sun) and senior researchers and past and present IDF Executive Council members Professors Kadowaki, Lee, Jenkins and Li conducted a systematic review and meta-analysis of the Type 1 diabetes (T1D) incidence and where data were available trends over time.

Based on 45 publications T1D incidence in 11 WPR countries varied widely, ranging from 0.9 (95 % confidence intervals (CI), 0.6-1.3) in Fiji to 23.2 (95 % CI, 21.3-25.2) in Australia. The mean annual increase over time ranged from 2.8 % in Australia (1990-2002) to 14.2 % in Shanghai (1997-2011). T1DM incidence is increasing over time, the greatest increase being in China (2.7-fold over 30-years) then Thailand (2-fold over 15-years).

Results increase understanding of our regional T1D incidence and inform research and healthcare strategies.



How to reach the article

- See on PubMed

<https://pubmed.ncbi.nlm.nih.gov/38104899/>

- See on Diabetes Research Clinical Practice

[https://www.diabetesresearchclinicalpractice.com/article/S0168-8227\(23\)00818-5/abstract](https://www.diabetesresearchclinicalpractice.com/article/S0168-8227(23)00818-5/abstract)

Fig. 3. Pooled meta estimate of Type 1 Diabetes incidence before and after 2000 across countries: Australia, New Zealand, East Asia (China, Japan, Hong Kong SAR) and Thailand.

Source: Wang, Du et al. "Incidence and trends of type 1 diabetes before and after 2000 in the Western Pacific Region: A systematic review and meta-analysis." Diabetes research and clinical practice vol. 207 (2024): 111055. doi:10.1016/j.diabres.2023.111055

What You Can Find:

The IDF and IDF-WPR are posting a variety of information on various social media platforms. Our newsletter is one of them, and all previous issues are available on the IDF-WPR website.

@IDF-WPR [Website](#)

- Newsletters
- Disaster Manual
- Latest Study

@IDF-WPR [X](#)

- Updates
- Related information/Events

@IDF [Website](#)

- IDF Headquarters Activities
- Regional Activities

More IDF Social Medias

- IDF [Facebook](#)
- IDF [Instagram](#)
- IDF [X](#)
- IDF [LinkedIn](#)
- IDF [YouTube](#)

How to reach Newsletters?

Access the IDF website [and](#) go to the WPR Region page

Scroll down the page, and you will find the issues!



Related Events in Western Pacific, 2024

April

- [The World Health Summit Regional Meeting](#)

#WHSMelbourne2024 is visiting Australian shores for the first time 22-24 April 2024, providing a platform to elevate the health and wellbeing challenges facing us, and the Asia-Pacific region, to a global stage.



May

- [The 67th Annual Meeting of the Japan Diabetes Society](#) May 17-19

August

- [Diabetes Malaysia Conference 2024](#) August 2-4
- [The 16th Scientific Meeting of AASD in conjunction with the Ulaanbaatar International Congress of Endocrinology and Diabetes \(UICED\)](#) August 14-18

CALL FOR CONTENT!



Do you have news you want featured in the IDF WPR Newsletter? Would you like to promote your conference? **Send us your story** by May 31 to: idf.wpr@idf.org



Follow us on X (Twitter) @DiabetesIDF WPR1

Prize Winners of 2024 Q1

We hereby announce the IDF-WPR EMCR publication prizes for the 1st quarter of 2024!



CLINICAL

Dr. Lee-Ling Lim
(University of Malaya)

Trends in all-cause mortality among adults with diagnosed type 2 diabetes in West Malaysia: 2010 – 2019

[PMID: 37804999](#)



SCIENCE

Dr. Miwa Himuro
(Juntendo University Department of Medicine)

Novel time-resolved reporter mouse reveals spatial and transcriptional heterogeneity during alpha cell differentiation

[PMID: 37870650](#)



Prize Winners of 2023 Q4

We hereby announce the IDF-WPR EMCR publication prizes for the 4th quarter of 2023!



CLINICAL

Dr. Johnny T K Cheung
(The Chinese University of Hong Kong)

Early treatment with dipeptidyl-peptidase 4 inhibitors reduces glycemic variability and delays insulin initiation in type 2 diabetes: A propensity score-matched cohort study

[PMID: 37634071](#)



SCIENCE

Mr. Harry Cutler
(The University of Sydney)

Dual Tracer Test to measure tissue-specific insulin action in individual mice identifies in vivo insulin resistance without fasting hyperinsulinemia

[PMID: 37699358](#)



Dr. Johnny T K Cheung



Mr. Harry Cutler

What is the EMCR Publication Prize?



The IDF WPR publication prizes (4 times a year, one for clinical papers and one for basic science papers) are awarded to the best publications of the previous quarter and are selected by the newsletter editorial team based on the impact of the article.

The two winners receive an IDF-WPR Award Certificate and will be featured in this newsletter corner.

Would you like to Apply? Please complete and submit [the nomination form](#) by May 31, 2024.